



# Te Pānui

TERM 3 WEEK 2, 2019

FRIDAY 2 AUGUST, 2019

## TERM 3 DATES

### Goal Setting Meetings

6 August

Open Evening 6 August

WRISSA Volleyball

7 August

Year 7 Vision Screening

19 August

WRISSA Netball 21 August

WRISSA Rugby 4 Sept

AIMS Games 8—13 Sept

Art Show 13—15 Sept

Like us on Facebook!



facebook.com/  
southwellingtonintermediate

## Message from the Principal

It is with both regret and excitement that I am letting you know that this is my last term as principal of SWIS. I am leaving to take up a position at Ōtorohanga College. This is a school in crisis with many of the same issues that I discovered when I arrived at SWIS. I really really don't want to leave Wellington. I absolutely love it here and have made some amazing life-long friendships, and will be ever grateful for the opportunities that being the Principal of SWIS has afforded me. I thank especially Jo Lambert from my first BoT and Stu Birch the employment consultant who encouraged the rest of the board to take another look at my application.

Howard Young, who has been my right hand man and calm balance to my energy and relentlessness, to Rauru Walker the 3<sup>rd</sup> musketeer of the SLT whose help has been invaluable for driving forward te reo me tikanga Māori in this mainstream school, all of the amazing staff at SWIS. you all have a special place in my heart. I am proud to have led this school of amazing people, large and small.

Nga mihi

Traci Liddall



SWIS values are to be  
**Safe, Respectful, Responsible**

# Pedal Ready at SWIS



**Māuritau, Whakamana & Takohatanga**

# Welcome to SWIS

With the beginning of Term 3 we welcome some new Teacher Aides to the SWIS Whanau. With Brooke and Kate leaving last term we had to replace them and have done so with Kacee Simpson and Maddy Arnold, while the Board of Trustees has freed up some additional funding to allow us to increase the Teacher Aide hours accessible to our students. As a result we have also employed Annika Bowley and Robbie Neilson. We appreciate the Board of the Trustees willingness to put funding into this area as it will be of direct benefit to the students of South Wellington Intermediate School.

## SWIS Open Day

On Monday we held the SWIS Open Day for students looking at attending South Wellington Intermediate School in 2020. The morning was a huge success with the students engaging in a range of activities showcasing what SWIS has to offer. Thank you to the Year 8 Student Leaders who came to school on Monday and did a fantastic job of supporting the Year 6 students as they checked out the school. Some feedback we have received is included below.

“Just want to say thank you for making the day yesterday amazing for our visiting Y6’s. My daughter came home buzzing and I loved my keyring !”

“Many thanks for hosting our son this morning and all the organisation in the background, we really appreciate it. “



**Māuritau, Whakamana & Takohatanga**

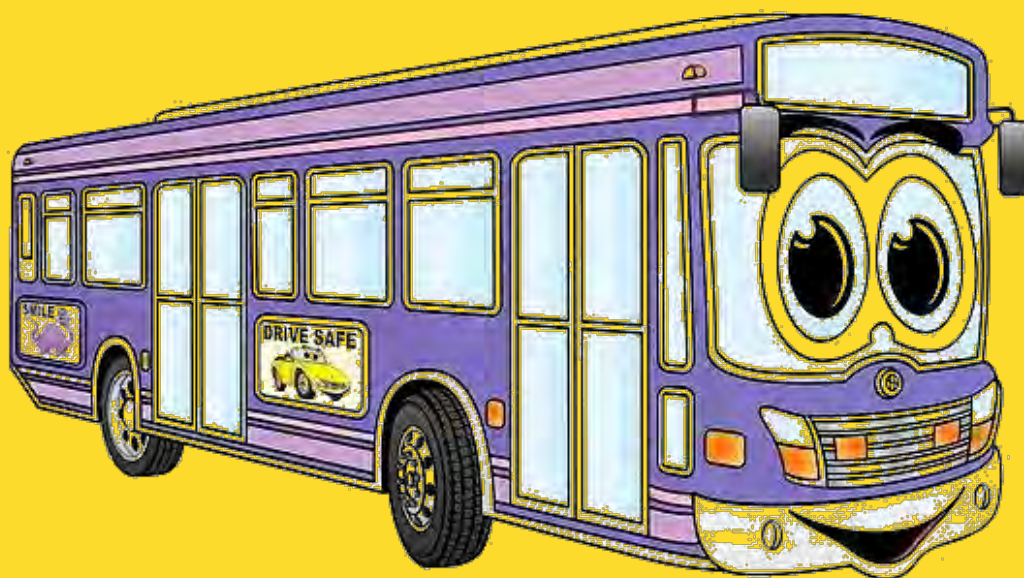
# Buses

Here at SWIS we are very lucky that our students have buses that can be used to assist students in getting to and from school.

It is important to be aware that while these services often have SWIS displayed on the bus the service is in no way connected to SWIS.

At SWIS our values are to be Safe, Respectful and Responsible at all times. We regularly remind students of this and the fact that these need to be a focus even when there are no teachers around, or after the school bell when they have left school and are no longer in the care of the school. This includes when waiting at the bus stop as well as when riding the bus. It is important that students remember that when in public wearing their SWIS uniforms their actions reflect on the school and themselves.

We are aware that the bus services have created some challenges for students and their parents due to non-responsive bus drivers or unreliable service. Unfortunately this is beyond the school's control, however both the Senior Leadership Team and the Board of Trustees have contacted Metlink to express our concern and dissatisfaction regarding this. We would suggest that if you have concerns regarding this that you contact Metlink directly and add your voice to those who are also unhappy with the service as it currently operates.



**Māuritau, Whakamana & Takohatanga**

# Property Update

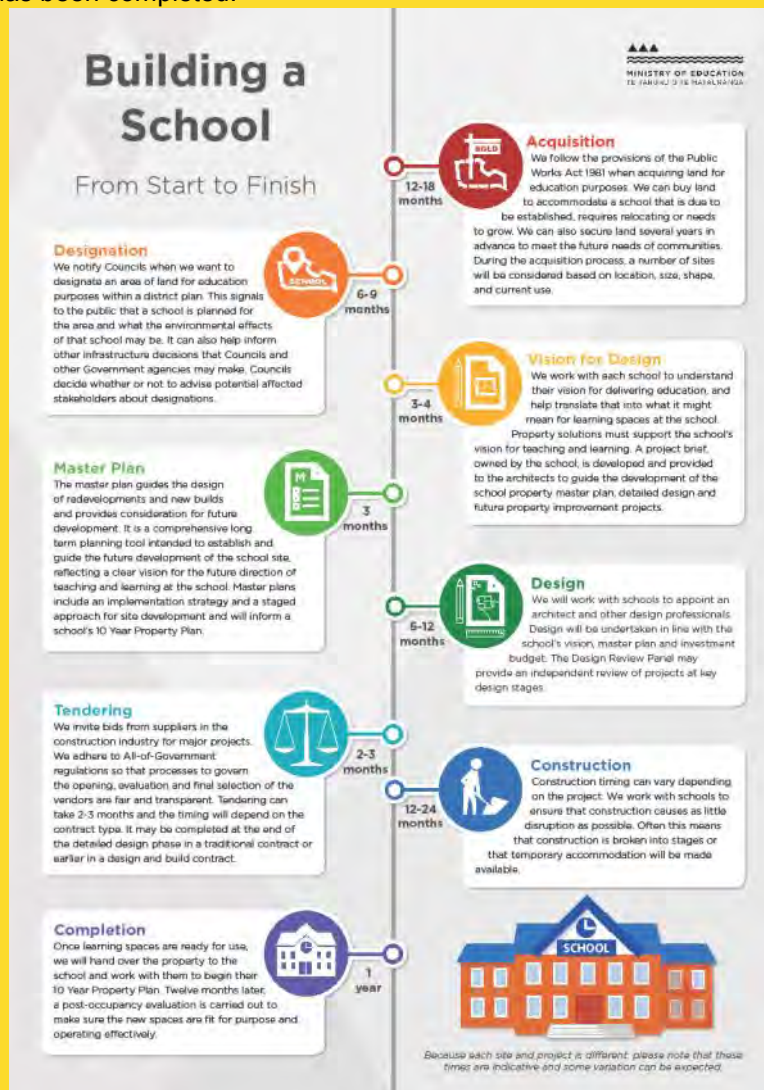
This week we had 5 Consultancy Firms come through and view the school with a view of submitting a tender to design the buildings as part of the rebuild project.

This initial stage is long, but it is important that it is a thorough process to ensure that the design that is decided on meets the needs of the school and its students.

We have included the graphic below as a reminder of the steps of the process that is taking place.

Redevelopment work has begun at Wakefield Hospital which has led to some changes for SWIS.

Due to the location of the work some of the land on the Northern boundary is no longer accessible. It also means that access to the school via the vehicle entrance on Rintoul St gate will not be possible (other than emergency services) until this work has been completed.



## Art Room Supplies

The Art Room is in need of empty egg containers with lids. If you have these please bring them to either the school office or they can be delivered to the Art Room. Many thanks in advance.

# Māuritau, Whakamana & Takohatanga

# New Students for 2020

SWIS will be holding our Open Evening for potential students and their families for 2020 early in Term 3.

- Open Evening will be held from 6 p.m. until 7:30 p.m. on Tuesday 6 August

## Year 7 Vision Screening

### Year 7 Vision Screening - Information for parents

Regional Public Health provides a vision screening programme for all Year 7 students.

- **Vision** – pupils will be advised of results at the time of screening. If further assessment is recommended you will be notified by mail.
- **Children who wear glasses and/or are under professional care and have regular checks will not require a vision check from our service.**

**Non-consent – please notify your school if you do not want your child being screened.**

*This screening is not a full assessment of your child's vision. If you have any concerns, please see an optometrist.*

## St Catherine's College Enrolments

This is just a reminder that enrolments are now open at St Catherine's College.

Our closing date will be on **30th August 2019**. If you miss this date, please contact us on

04 9398988, as late enrolments will be considered.

We are happy to answer any questions you may have, or if you would like to come and talk to one of our staff members.

Our contact details are as follows:-

**04 939 8988**

**office@stcatherinescollege.school.nz** or **office@scc.school.nz** (less typing)

*St Catherine's College aims to nurture and empower our young women to be active and creative learners.*

# Māuritau, Whakamana & Takohatanga