



NAME _____

HOMEROOM _____



INTERNATIONAL
STUDENT
ORIENTATION
BOOKLET

SWIS

CONTENTS

Welcome!

Meet Your Teachers

Important Contacts

School Map

Our School Day

School Uniform

General School Information

Enrichment Programmes

Extracurricular activities

Camp & EOTC

My Timetable

FAQs

School Quiz!





WELCOME TO SWIS!

Tēnā koutou, Konnichiwa, As-salāmu 'alaykum, Hola, Nǐ hǎo, Annyeonghaseyo, and Hello!

We care about your learning, wellbeing, and development, and support you to grow in confidence and independence.

You will enjoy a wide range of subjects and experiences, and get to learn with many different teachers across the school.

We look forward to being part of your learning journey!

Ngā mihi nui koutou.

He whānau kotahi tātou - We are one family



MEET YOUR TEACHERS



**School
Principal**



My Homeroom Teacher is: _____

My Buddy's name is: _____

The name of the SWIS Principal is:

**Deputy
Principal**



The name of the SWIS Deputy Principal is:

**Deputy
Principal**



The name of the SWIS Deputy Principal is:

**School
Counsellor**



The name of the School Counsellor is:

**International
Student
Coordinator &
Office
Manager**



The names of the Office Staff are:

Office staff



IMPORTANT CONTACTS

**SWIS International
Coordinator:
Hayley Trenwith**



international@swis.school.nz



+64 22 022 5871

The International Coordinator is your first point of contact for all matters.

**SWIS Principal:
Brendon Henderson**



principal@swis.school.nz



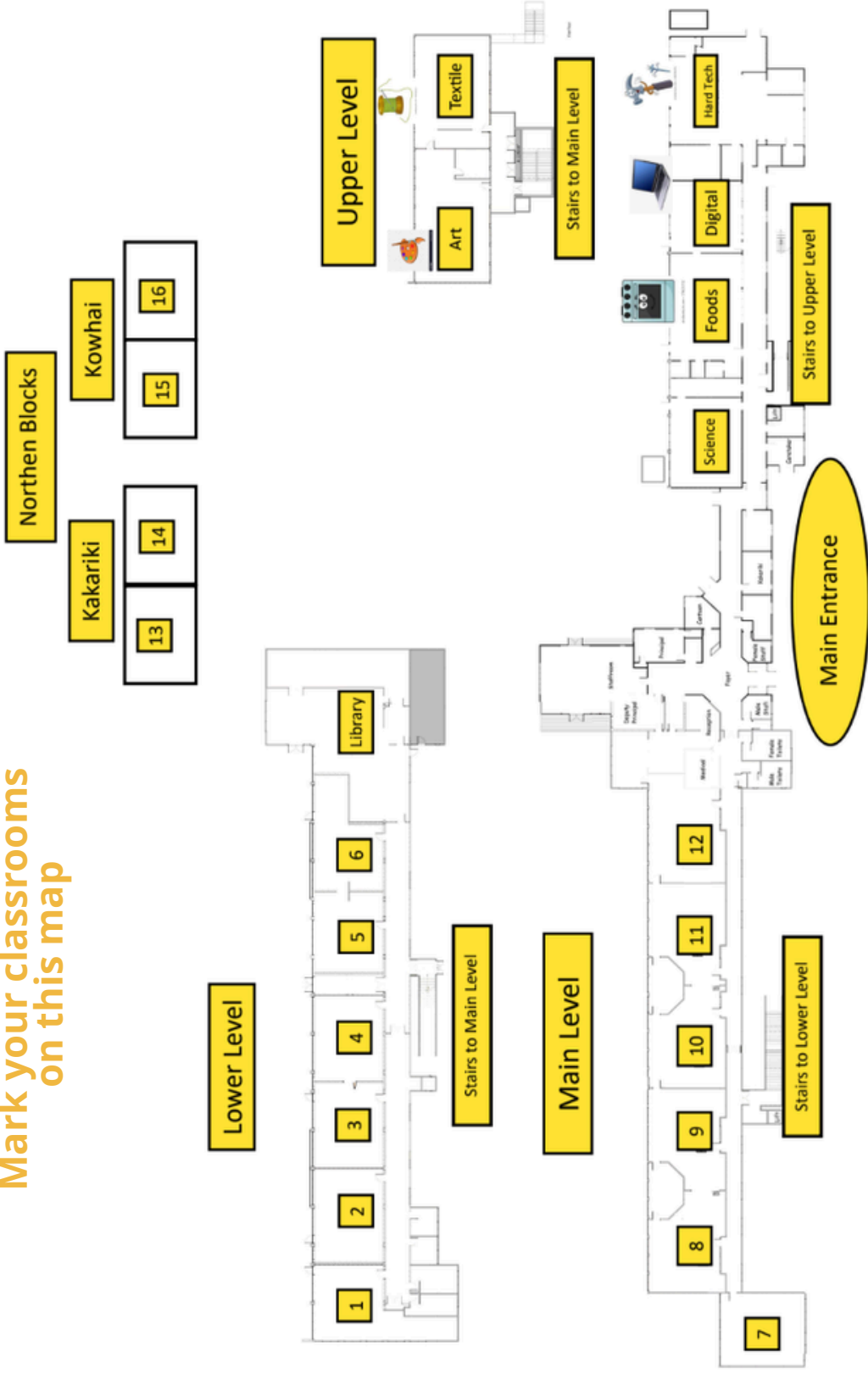
+64 21 160 3436





SWIS MAP

Mark your classrooms
on this map





OUR SCHOOL DAY

Each morning, you will start your school day at 8.45am in your homeroom.

Your teacher will take the roll and share daily notices about events and activities you can join.

You will learn with your homeroom teacher each day, which helps you get to know each other well.

Together, you will study:

- English
- Mathematics
- Social Studies
- Health
- Physical Education (P.E.)

During the week, your class will go to specialist classrooms for different subjects, taught by teachers who are experts in these areas:

- Science
- Te Ao Māori and New Zealand History
- Technology (e.g. digital technology, food, textiles, hard materials)
- The Arts (e.g. music, visual arts, film, drama, philosophy)

You will take part in Enrichment Programmes, where you can choose activities you enjoy, such as sports, languages, and other interests. These run on Monday and Friday afternoons.

There are two breaks each day - morning tea and lunch. You may also have sports practices or group meetings during these times.

At the end of the day, you return to your homeroom. The bell rings at 3pm, and you are free to go home.





SCHOOL UNIFORM



DAILY UNIFORM

P.E. & SPORT UNIFORM



Tick off the items once you have them.

- SWIS green polo shirt
- SWIS shorts or black track pants
- SWIS green sweatshirt or polar fleece

- SWIS yellow PE t-shirt
- Plain black shorts or track pants
- Suitable shoes for running

FOOTWEAR

Although there are no uniform shoes at SWIS, it is important to wear appropriate shoes for the activities.

For safety reasons, running shoes are needed for P.E. and closed shoes are needed when participating in Cooking and Hard Materials .





ADDITIONAL UNIFORM ITEMS

Tick off the items once you have them.

- Backpack
- Black rain jacket (worn when outside during cold or wet days)
- Any sun hat or cap (to be worn outdoors only)
School caps, bucket hats, and beanies are available from the School Office.
- OPTIONAL - SWIS beanie (woolly hat) or plain black beanie (to be worn outdoors in Term 2 and 3 only)
- OPTIONAL - Green or black thermal skins (or similar) can be worn under t-shirts in Term 2 and 3
- OPTIONAL - Waterproof, reflective backpack cover (available from the School Office)

UNIFORM RULES

- Please make sure all your belongings are clearly NAMED.
- Non-uniform items should not be worn with school uniform at any time. If you are unsure if an item is acceptable, please check with a teacher.
- No jewellery other than stud type earrings and a watch.
- A taonga (treasured or cultural item) may be worn if discussed and agreed to by the Principal.
- Hair is to be tied up off the face during class time.
- No make-up.





GENERAL SCHOOL INFORMATION



DIGITAL DEVICES AND STATIONERY

SWIS is a BYOD (Bring Your Own Device) school and we encourage you to bring a device (iPad, Chrome book, laptop) to school.

A complete list of stationery can be found at www.myschool.co.nz/swis. You can order everything you need here and have it delivered.



GETTING TO AND FROM SCHOOL

We encourage you to walk or ride a bicycle or scooter to school. You must wear a helmet.

A bicycle stand is available by the library, and you will need your own padlock. Scooters can be stored beside your classroom.

My plan for getting to school is:





MOBILE PHONES

You are not to use your mobile phone during school hours. Give it to your homeroom teacher for safekeeping at the beginning of the school day, and it will be returned to you at the end of the day.

Families can contact our office if a message needs to be passed on. Talk to your homeroom teacher or the office if you need to make a call.



ATTENDANCE / ABSENCES

You must attend 100% of your education programme.

If you are sick and cannot come to school, your caregiver must phone the school before 8.30am.

When you return to school, you must bring a note from your caregiver to explain your absence.

This note must be written by the caregiver you live with.





ENRICHMENT PROGRAMMES

SPORTS & LANGUAGES

These programmes run weekly on Monday afternoons.

Languages can include French, Italian, Japanese, Mandarin, Malay, and Te Reo. Sports can include basketball, table tennis, football, kia o rahi (a Māori ball sport), and many more.

Language & Sport options I'm interested in:



FRIDAY ENRICHMENT

You choose a subject that you are interested in or passionate about from the options provided. The programme runs on a Friday afternoon, for either one term, half a year or the whole year depending on the programme.

Previous options have included:

- Animal Safari
- Theatre Sports
- Building
- Card Art
- Coding
- Gardening
- Pump Dance
- School of Rock

Enrichment options I'm interested in:





EXTRACURRICULAR ACTIVITIES

We have many extracurricular sporting, academic, cultural and arts programmes, which you can choose to participate in.

- We run sports teams for water polo, netball, basketball, floorball and touch rugby. These are after school or on weekends.
- We are members of the Wellington Regional Intermediate Schools Sports Association and participate in a range of inter-school sporting events annually.
- We offer 'Future Problem Solving' which runs before school and challenges students in critical thinking.
- We have Kapa Haka and Polyfest Cultural groups which participate in many school-based, local and regional events.
- We participate in events such as AIMS Games, EPRO-8, Kids Literature Quiz programme, ICAS examinations, National writing and art competitions and events, William Pike Challenge and much more.
- Throughout the year we also participate in social awareness activities such as the 40 hour famine and Pink Shirt Day.



Extracurricular options I'm interested in:



CAMP AND EDUCATION OUTSIDE THE CLASSROOM

CAMP

A highlight of the year for all our students is school camp.

Our two-night camp at the beginning of the year gives you the opportunity to get to know your classmates and teachers, and participate in lots of fun activities such as:

- Flying Fox
- 10 – Pin Bowling
- Confidence Course
- Mini Golf
- Kayaking
- Water Slide
- Mud Slide
- Swimming Pool

EOTC WEEK

EOTC (Education Outside the Classroom) is another very popular event in our school year.

It takes place in Term 4 and you will be able to choose from many options such as major camps and numerous other activities in and around Wellington.





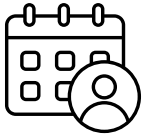
MY TIMETABLE

Write in your subjects and teachers

Time	Monday	Tuesday	Wednesday	Thursday	Friday
8:45 - 9am	Homeroom				
9:00 - 10:30am	Block 1 - Homeroom Subject:	Block 1 - Homeroom Subject:	Block 1 - Homeroom Subject:	Block 1 - Homeroom Subject:	Block 1 - Homeroom Subject:
10:30 - 10:50am	Morning Tea				
10:50 - 12:20pm	Block 2 - Homeroom Subject:	Block 2 - Homeroom Subject:	Block 2 - Homeroom Subject:	Block 2 - Semi-spec: Subject:	Block 2 - Homeroom Subject:
12:20 - 12:30pm	Lunch Eating				
12:30 - 1:10pm	Lunch Play				
1:15 - 2:50pm	1:15 - 1:45pm - Whole School Kapa Haka/ Waiata	Block 3 - Semi-spec:	Block 3 - Semi-spec:	Block 3 - Semi-spec:	Block 3 - Enrichment:
	Block 3 - Enrichment:				
2:50 - 3pm	Homeroom				



FREQUENTLY ASKED QUESTIONS



WHAT TO DO IF YOU HAVE A DOCTOR, DENTIST OR SPECIALIST APPOINTMENT

- Bring a note from your caregiver asking permission for you to leave school for your appointment.
- Give the note to the School Office when you arrive at school. They will give you a green Exit Pass.
- Go to the School Office and sign out before you leave the school grounds.
- If you come back before the end of school, sign back in at the School Office.



WHAT CAN I DO IF I FEEL ILL AT SCHOOL?

Our School Sick Bay is located next to the School Office. If you don't feel well while you are at school, go to the School Office for medical attention:

- Tell your teacher you are ill. They will give you a note to take to the Office.
- The Office Staff will decide if you need to go home or if they can help.
- If the Office Staff and your caregiver agree you can go home, you must sign out at the School Office.
- If you have an accident at school, see the Office Staff as soon as possible.





WHO CAN I TALK TO IF I'M FEELING UPSET OR NEED SUPPORT?



SWIS has a counsellor who can help and support you with any personal issues.

This is confidential and free.

Some of the help counselling can provide:

- Loss or grief
- Anxiety
- Concerns about sexuality
- Changes and worries in your life
- Relationships/Family
- Stress management
- Addictions
- Personal trauma
- General wellbeing

If you would like to see the School Counsellor, Nazli Ozkan, please email Nazli.Ozkan@swis.school.nz or visit her office located downstairs by Room 1.



CAN I LEAVE SCHOOL DURING THE SCHOOL DAY?

It is important that the school knows where you are during the school day, should there be an emergency or fire drill.

You are not allowed to leave the school grounds without following the correct procedures (see leaving for appointments etc).

You must never go home from school without permission.





QUIZ TIME!



Get your homeroom buddy to help you with the answers to these questions if needed!



1 SCHOOL HOURS

School starts at _____
School finishes at _____

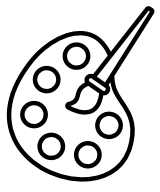
SCHOOL MISSION

The South Wellington Intermediate School Mission is:



2

_____ and



3 WHAT IS SEMI-SPEC?

3

SCHOOL VISION

To always _____ the status quo,

4

_____ and



our students achieve their highest potential at SWIS and beyond.

LEARN TE REO!



WHAT DOES KIA ORA
MEAN?

WHAT DOES KAI MEAN?

WHAT DOES MAHI MEAN?

WHAT DOES WHĀNAU MEAN?

WHAT DOES KA PAI MEAN?





SOUTH WELLINGTON INTERMEDIATE SCHOOL



+64 4 939 9872



principal@swis.school.nz



www.swis.school.nz/international-students



**30 Te Wharepōuri St
Berhampore
Wellington 6021
New Zealand**